

**Figure 3. Seeds, flower and fruits of *Rubus* spp.**

**A-E. Seeds of *Rubus* in side view, and with outline of median TS. Scale bar=1 mm.**

- A. *R. australis*.  
 B. *R. cissooides*.  
 C. *R. parvus*.  
 D. *R. schmidelioides*.  
 E. *R. squarrosus*.**

**F. *R. australis*. Flower from below, showing swellings at base of sepals. Scale bar= 1 mm.**

**Ripe fruits of *Rubus*, showing sepals reflexed or not. Scale bar=1cm.**

- G. *R. australis*.  
 H. *R. cissooides*.  
 I. *R. parvus* (note remains of stamens).  
 J. *R. schmidelioides*.  
 K. *R. squarrosus*.**

#### Acknowledgement

I am grateful to Peter de Lange for supplying chromosome numbers.

#### References

- Allan, H. H. 1927: An artificial *Rubus* hybrid. *Transactions of the New Zealand Institute* 58: 51-54.  
 Allan, H. H. 1928: Further notes on an artificial *Rubus* hybrid (x *Rubus parvicoloratus* Vida). *Transactions of the New Zealand Institute* 59: 643-644, Pl. 77.  
 Allan, H. H. 1961: *Flora of New Zealand*. Vol. I. Govt Printer, Wellington.  
 Cockayne, L. 1910: On a non-flowering New Zealand species of *Rubus*. *Transactions of the New Zealand Institute* 42: 325-6.  
 Connor, H. E.; Penny, E. D. 1960: Note on proliferation in *Rubus parvus* Buchanan. *New Zealand Journal of Science* 3: 396-398.  
 Moore, L. B. 1975: Sex in *Rubus*. *Canterbury Botanical Society Journal* 8: 7.  
 Poole A. L & Adams, N.M. 1964: *Trees and shrubs of New Zealand*. Government Printer, Wellington.  
 Royen, P. van 1969: The genus *Rubus* (Rosaceae) in New Guinea. *Phanerogamarum Monographiae*, vol. 2. Cramer, Lehre.  
 Sampson, F. B.; McLean, J. 1965: A note on the occurrence of domatia on the under side of the leaves in New Zealand plants. *New Zealand Journal of Botany* 3: 104-112.  
 Wardle, P. 1991: *Vegetation of New Zealand*. C.U.P, Cambridge.  
 Webb, C. J; Simpson, M.J.A. 2001. Seeds of New Zealand - gymnosperms & dicotyledons. Manuka Press. 428 pp.  
 Webb, C. J; Sykes, W. R.; Garnock-Jones, P. J. 1988: *Flora of New Zealand*. Vol. IV. D.S.I.R. Botany Division, Christchurch.

## Habitat, habitat, habitat: Titirangi border home for *Drymoanthus adversus* (Orchidaceae)

Rhys Gardner

In forest on the east side of the Big Muddy estuary, in a spot warmed only by the mid-afternoon sun, this little epiphyte is growing in fair abundance on the trunks of two shoreline trees.

The species is plentiful enough north and south of Auckland, for example at Maunganui Bluff and in the

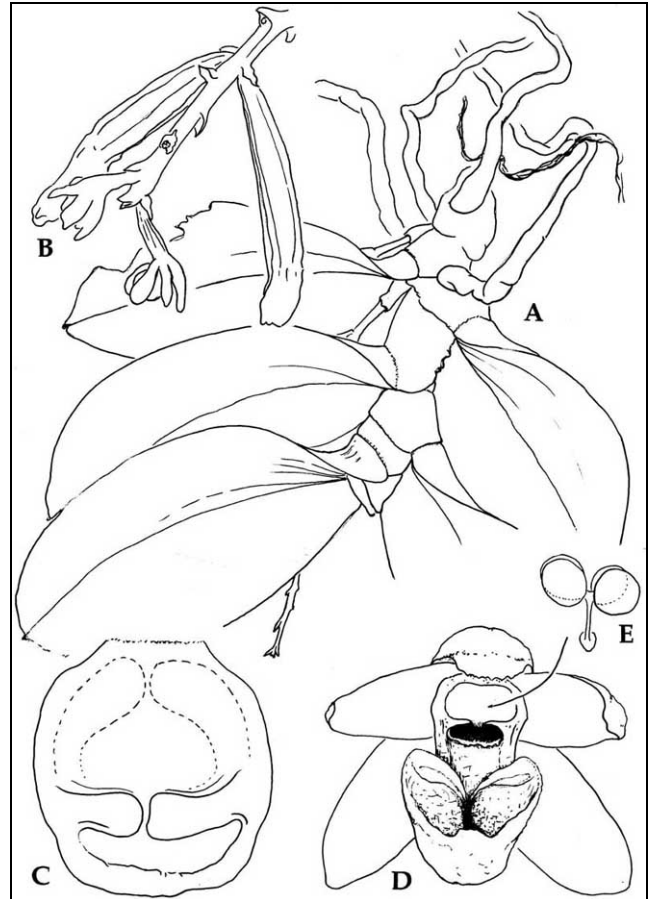
Hunua Ranges, but for the Waitakere Ranges I know of only one previous collection (AK, Hatch, 1945, "Laingholm") and the sighting of it on fallen branches of an old kahikatea (*Dacrycarpus dacrydioides*) near the Cascades (Jones 1994).

The reason for its scarcity cannot be the lack of host trees (though one of its favorites, *Beilschmiedia tarairi*, is very local in the Waitakeres). If my find is anything to go by, *D. adversus* should be searched for further west along the shore of the Manukau Harbour, in sheltered stream mouths, on the older rough-barked trees like mahoe (*Melicactus ramiflorus*) and rewarewa (*Knightia excelsa*) and also on nikau (*Rhopalostylis sapida*).

Bruce Irwin (Moore and Edgar 1970; Moore & Irwin 1978; Molloy and St George 1994) has illuminated some details of *D. adversus*: the spotted leaves and perianth, the fleshy double-pocketed labellum, and the stigma which is simply the circular orifice to a tube leading down to the top of the ovary. My material, illustrated at right (Figure 1), had column wings rather less prominent than his did, apparently.

**Figure 1. *Drymoanthus adversus* (Hook.f.) Dockrill. Based on ROG 10515.**

- A. Whole plant. Leaves 1.5 cm wide.**
- B. Inflorescence with developing pods (ovary 1 cm long).**
- C. Labellum (flattened, from above, 2 mm long). Showing the front third of the labellum almost closed by a pair of well-developed calli; the rear two-thirds of labellum ringed by a pair of much lower calli.**
- D. Flower from in front, c. 4 mm diam. Anther-cap and pollinia removed.**
- E. Pollinia in two unequal-membered pairs, stipe ending in a sticky disc.**



Collection: Laingholm, ARC's "Manchester Unity Block", Finn Creek, low epiphyte on an old tanekaha and a kowhai close together on shoreline, southern exposure, numerous small plants and several flowering ones, not seen on the other good-sized trees (mostly Hall's totara) of this sheltered and shady creek mouth, 24 Nov 2003, ROG 10515, AK.

#### References

- Jones, S. 1994: Uncommon plants in the Waitakere Ranges (Number 2). *Auckland Botanical Society Journal* 49: 82.  
 Molloy, B. P. J. and St George, I. M. 1994: A new species of *Drymoanthus* (Orchidaceae) from New Zealand, and typification of *D. adversus*. *New Zealand Journal of Botany* 32: 415-421.  
 Moore, L. B. and Edgar, E. E. 1970: Flora of New Zealand. Vol. II. Government Press, Wellington.  
 Moore, L. B. and Irwin, J. B. 1978: The Oxford Book of New Zealand Plants. O.U.P., Wellington.

## Population of *Carex brownii* at Stanmore Bay

Mike Wilcox

On 25 August 2003, with John Wilcox, I checked out a block of DOC land at 53 Stanmore Bay Road, Whangaparaoa Peninsula. It adjoins the Girl Guides centre and used to be the grounds of the original Whangaparaoa School. DOC are handing it over for community use, jointly Forest & Bird and John's community vegetable garden group.

The land is sloping and generally poorly drained. There are some native plantings dating to the original school, and several clumps of exotic trees planted or

naturalised. There are a lot of weeds, including various South African Iridaceae like *Watsonia*, *Gladiolus*, *Chasmanthe*, *Montbretia*, *Sparaxis*, *Babiana*, and *Aristea*; and pampas grass (Wilcox & Clapperton 2003).

On a poorly-drained grassy slope next to the road I found a loosely tufted species of a weedy-looking *Carex*, 30-70 cm tall, growing in abundance, which could not be immediately identified (Wilcox & Clapperton 2003). I collected some material (AK